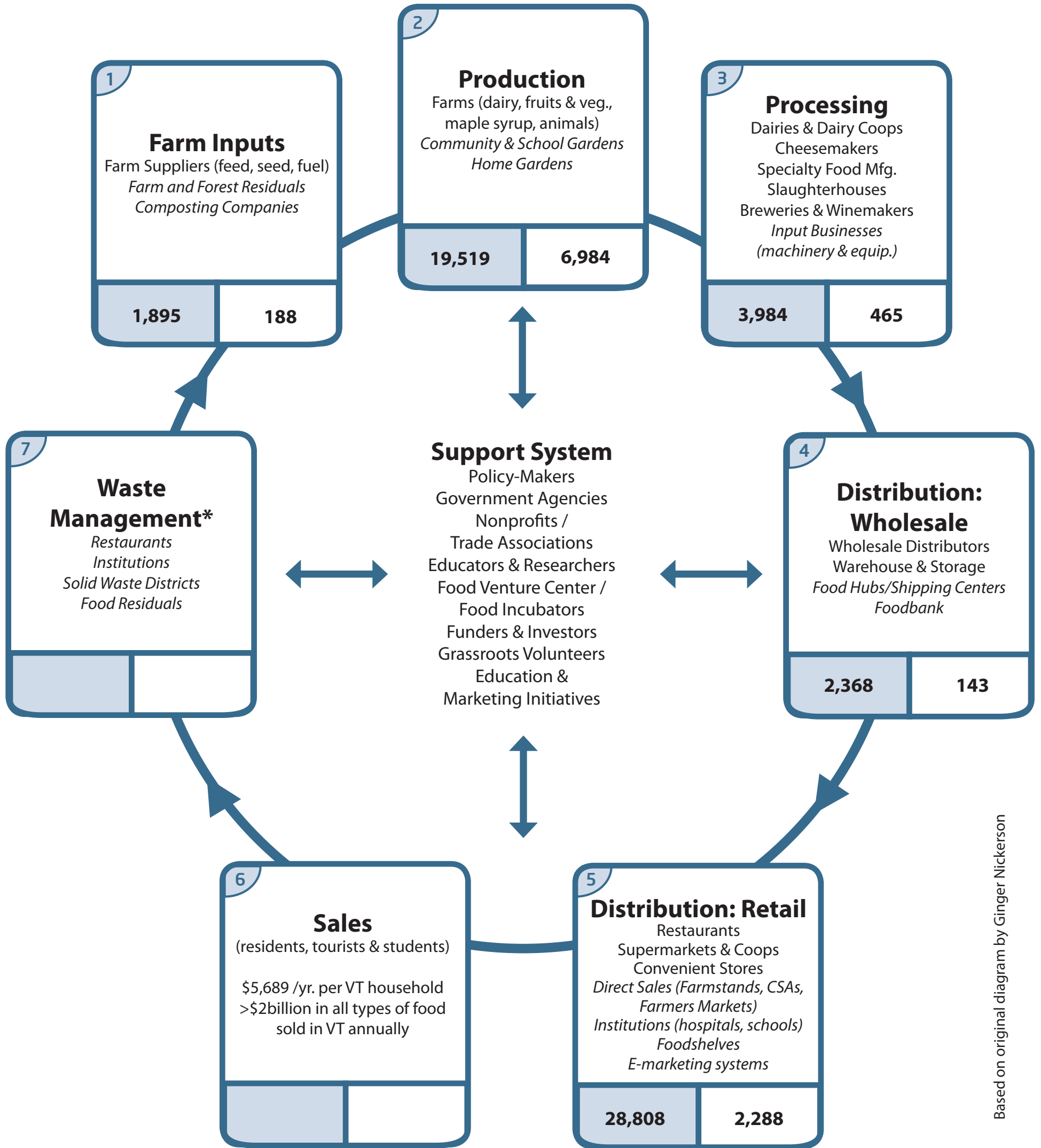


Elements of a Food System



Based on original diagram by Ginger Nickerson

Key

55,574 Jobs 305,758 private jobs 18% of private jobs	10,068 Establishments 84,546 private estab. 12% of private estab.
---	--

Note: All private sector data from the Vermont Department of Labor (2009 3rd quarter, QCEW), non-employers statistics (2007, unpublished) and the 2007 Census of Agriculture. All figures are VT numbers only. The data indicated in tabs above are not final numbers nor all inclusive; data still being collected through the Farm to Plate process. Updates will be forthcoming.

*Waste Management: Cannot specify food-related employment with available statistics.